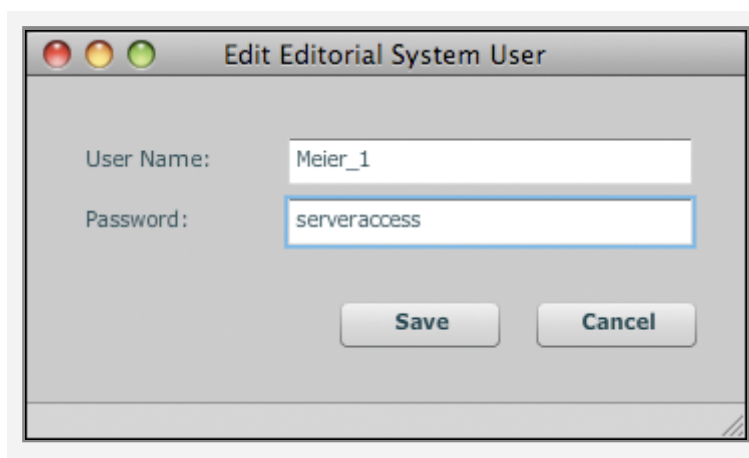


Additional configuration for vjoon K4 5.9 support

i In order to integrate MadeToPrint Server with K4 5.9 publishing system, some further adjustments are required. Users have to enter a valid name in combination with a password, otherwise MadeToPrint Server would log out after every job having been executed.

- Click on the *Editorial* button within the MadeToPrint Server run dialogue.
- Enter a valid user name and a password to log on to the K4 5.9 system permanently. Click on *Save* to confirm the log on.



Setting up MadeToPrint Server for K4 5.9 integration

- MadeToPrint Server is ready for use with K4 5.9 now.